

ACCESS + OPERATIONS

🕒 Park Hours

The Park will follow the standard, seasonally adjusted LA County Parks & Recreation hours of operation. Staff/Security located at the Visitor Center would monitor the park during operating hours.

What security measures would you like to see?

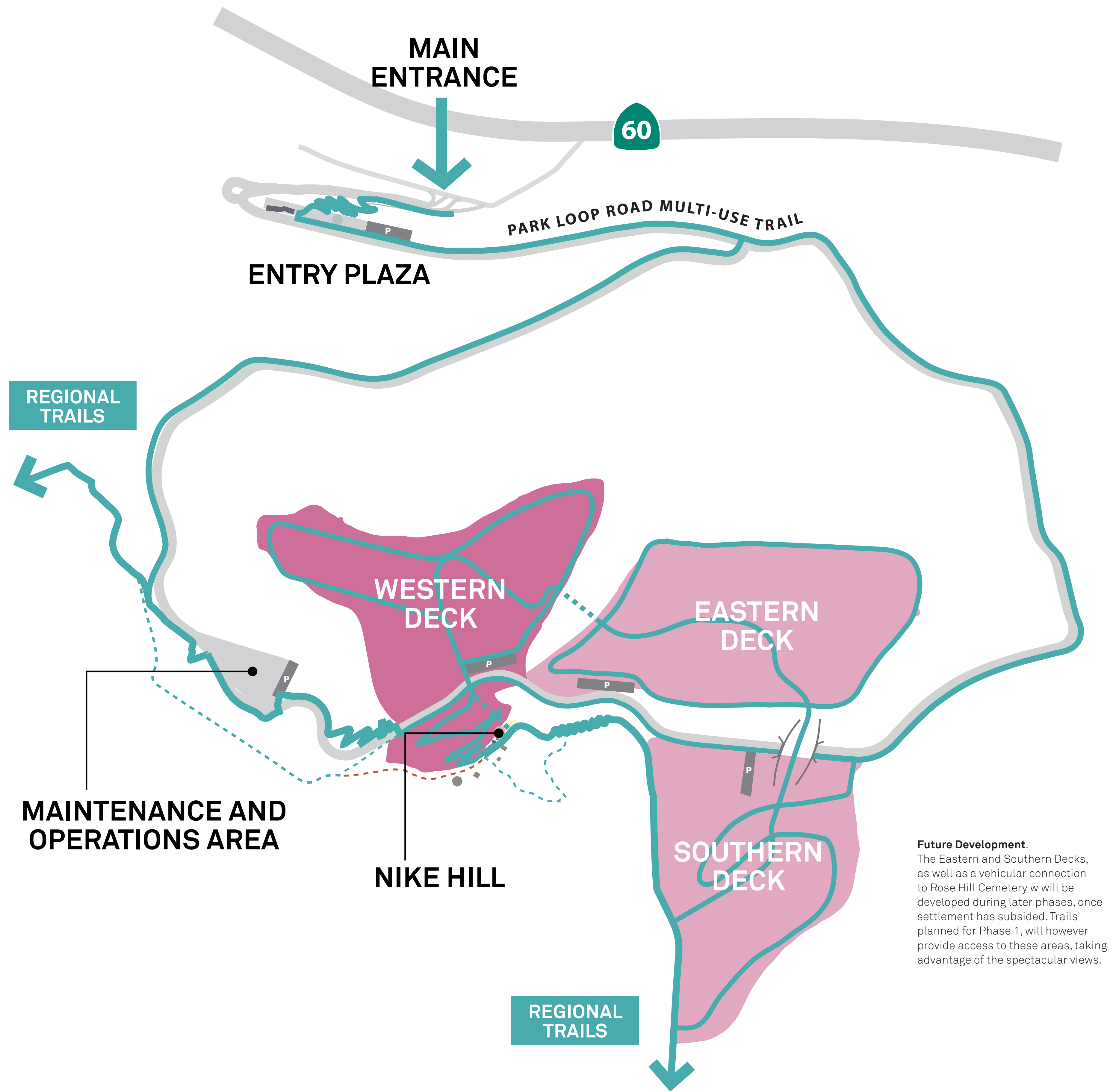
🚶 Trails and Outlooks

Western Loop Trail—roughly 1.1 miles, from 906' to 1022'
 Eastern Loop Trail—roughly 1.2 miles, from 995' to 1070'
 Southern Loop Trail—roughly 0.9 miles, from 960' to 1065'
 Deck Connector Trail—roughly 1.2 miles, from 957' to 1050'

🛣️ Loop Road

There will be one vehicular access point at Crossroads Parkway and a one-way loop road through the site. The road will be limited to ongoing operations and park staff. The limited vehicular access to the site will help maintain the natural experience of the park for a diverse group of users. A shuttle system for park visitors is being explored. A total of (5) parking lots along the Loop Road are being explored, as well as a comprehensive shuttle system.

How important is vehicular access to you? Would you use a park shuttle?



Map of Loop Road and Park Trails 2016 Master Plan

Gateway to Nature

🚲 Park Visitor Education Center

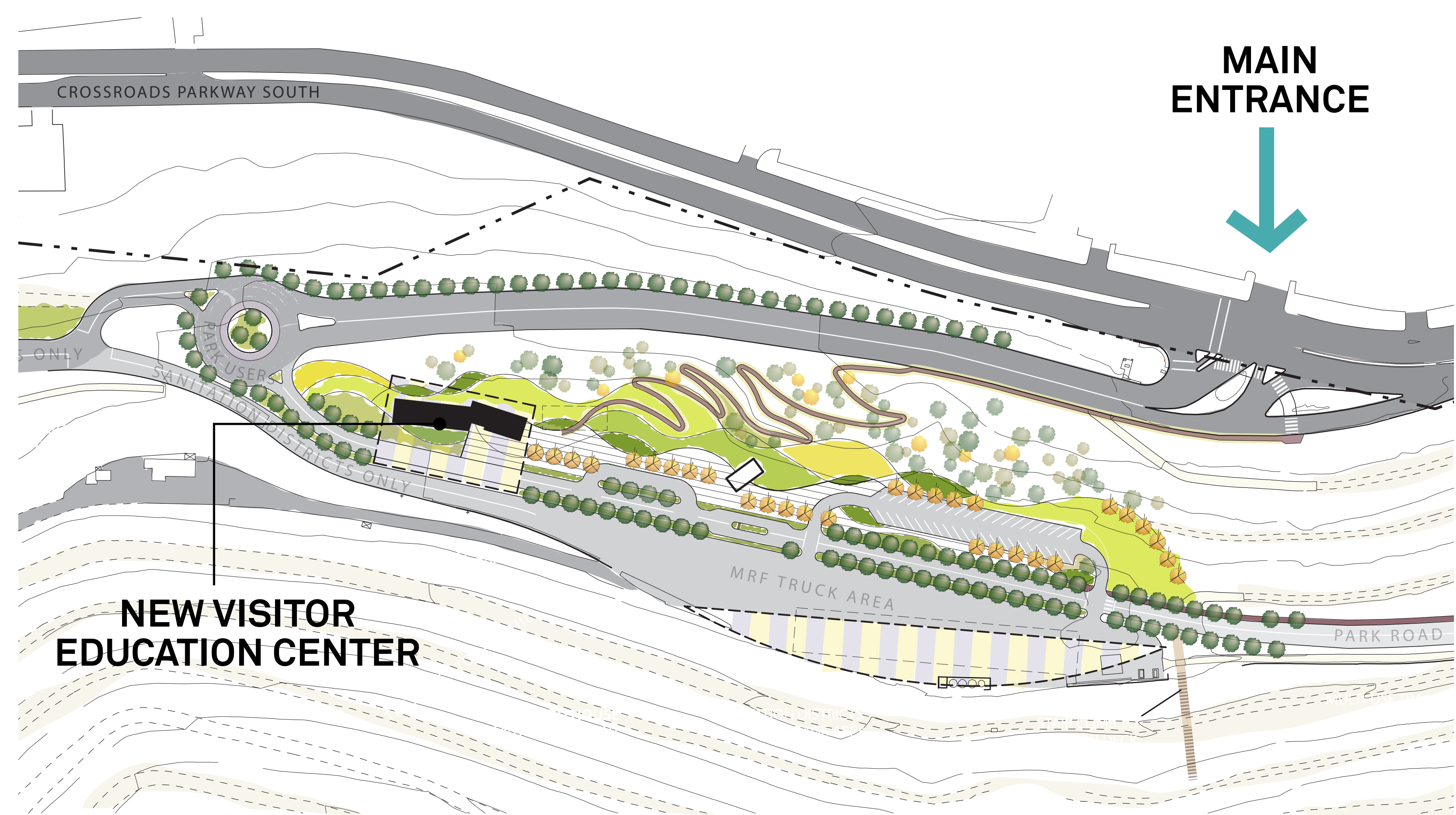
Visitors will start their experience at a park visitor's center with history and information about the site and environmental educational programming. The center will also accommodate shared office space for LA County Parks & Recreation and the Sanitation Districts.

What features, amenities, or experiences do you envision at the visitors center?

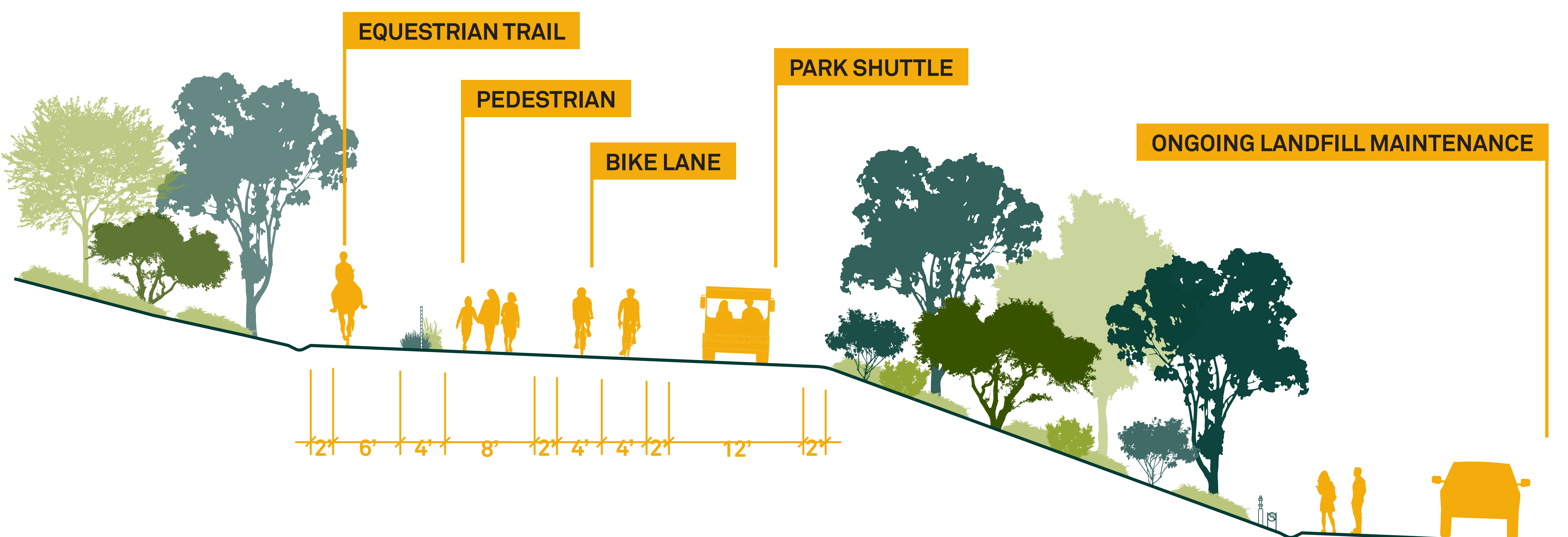
➔ Main Entrance and Entry Plaza

The only vehicular access to the Loop Road would be from Crossroads Parkway, and would be a shared entrance with on-going truck traffic to the Materials Recovery Facility. Entrance improvements would include a modified road system and new pedestrian crosswalks.

Would the truck traffic and the continued operations by the Sanitation District concern you?

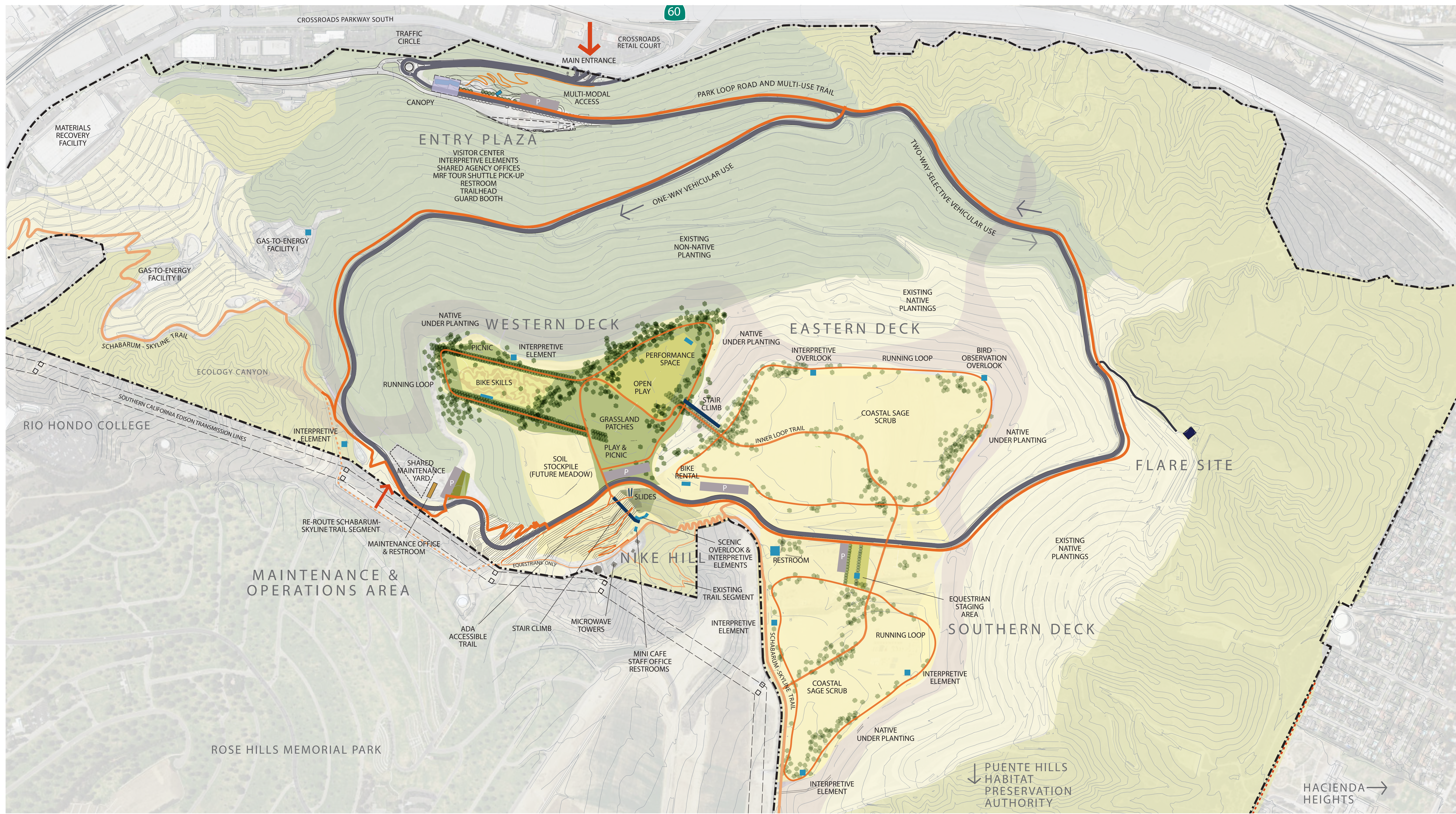


Entry Plaza Enlargement 2016 Master Plan



Proposal for Multimodal Loop Road Section How would you prefer to enter into the park?

OUTDOOR RECREATION -



What Does Passive Recreation Mean To You?

Design Ideas for Passive Recreation at Puente Hills Landfill Park *What would you want to do while at the park? How do you use parks today?*



Western Deck

The 40-acre Western Deck would be the first developed area, connecting to improvements at Nike Hill and existing trails. The deck would support two picnic grounds, open play areas, part of an inner trail loop, running loops, access to stair climbs, a bike skills area, and a daytime performance space.

What other activities would allow you to experience the site?



- Walking and Hiking Trails
- Fitness Loops
- Stair Climbs



- Bike Skills Course
- Bike Trails
- Service Points



- Staging Areas
- Trails Rides
- Picnic Stops



Building Community *How do you like to stay active? Do you do this in groups?*

+ PERSONAL WELLNESS

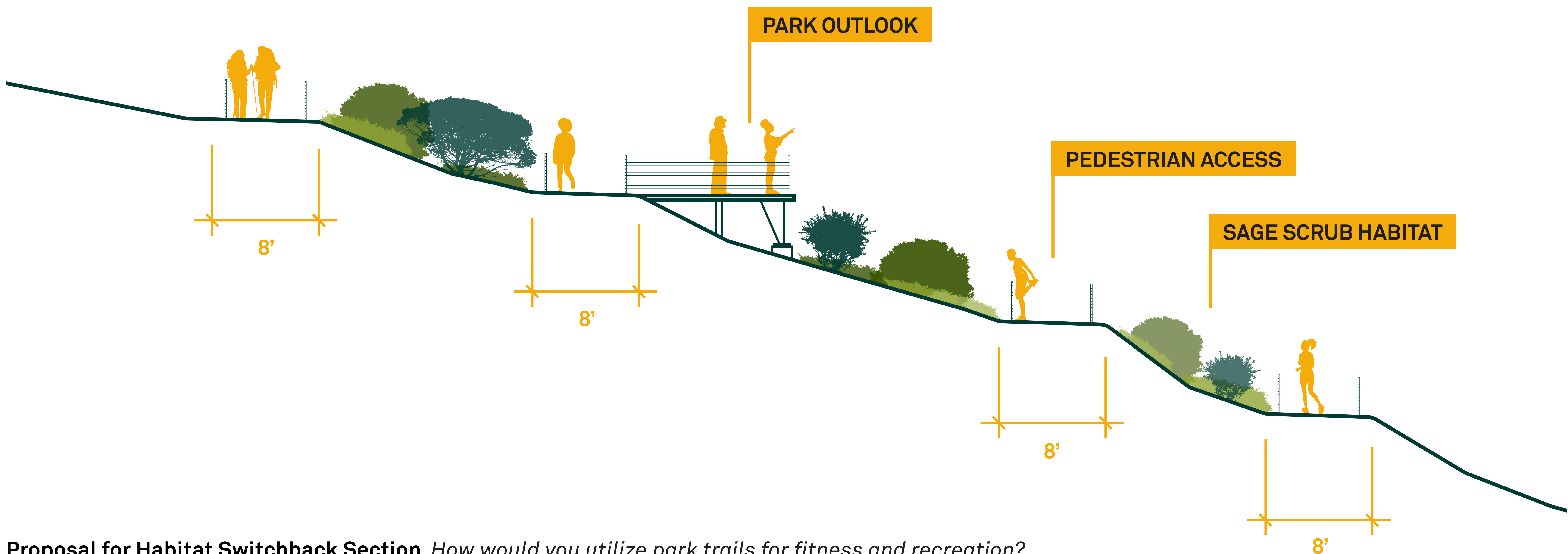


Promoting Wellness *What type of park amenities do you utilize for personal fitness?*

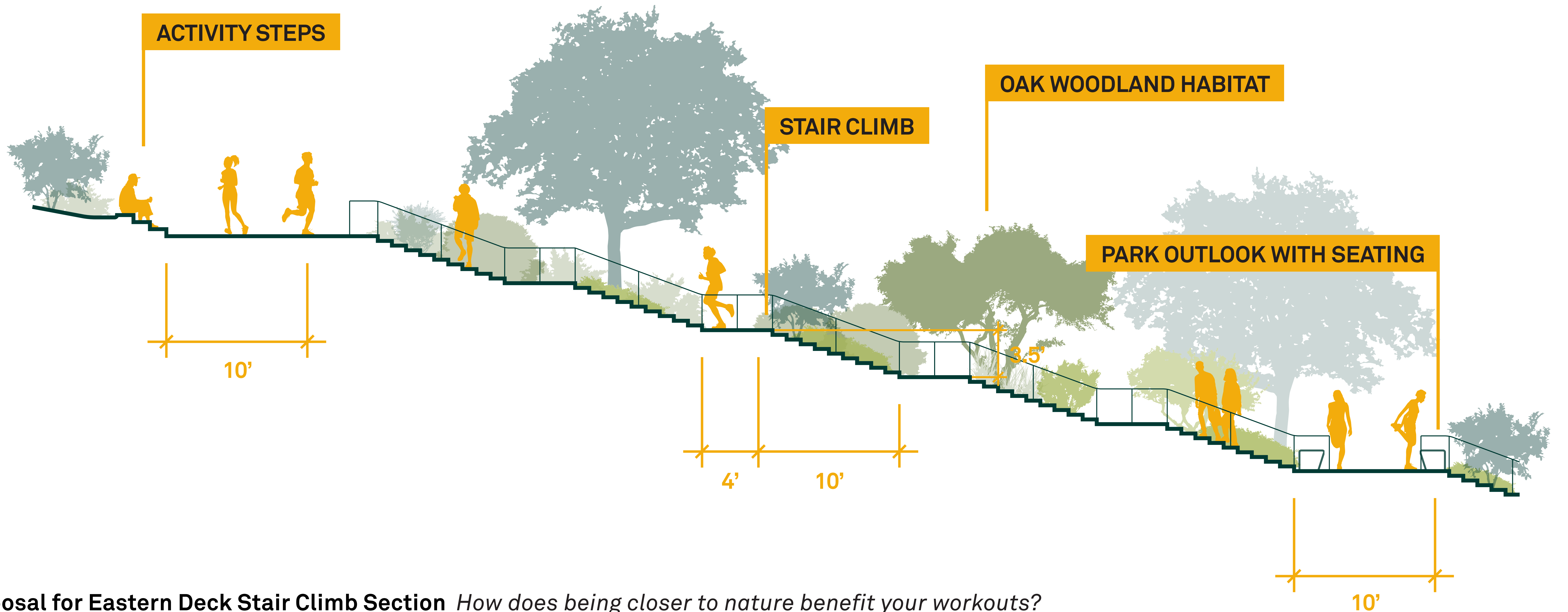


Restoring Mental Wellbeing *How do natural environments impact your mental health?*

Crafting Play *Can the outdoors inspire lifelong values?*



Proposal for Habitat Switchback Section *How would you utilize park trails for fitness and recreation?*



Proposal for Eastern Deck Stair Climb Section *How does being closer to nature benefit your workouts?*

ARTS + PROGRAMMING



Recognizing Site History Can waste be recycled for art programs on the site?



Creating Community Spaces What public spaces are significant to your friends and family?

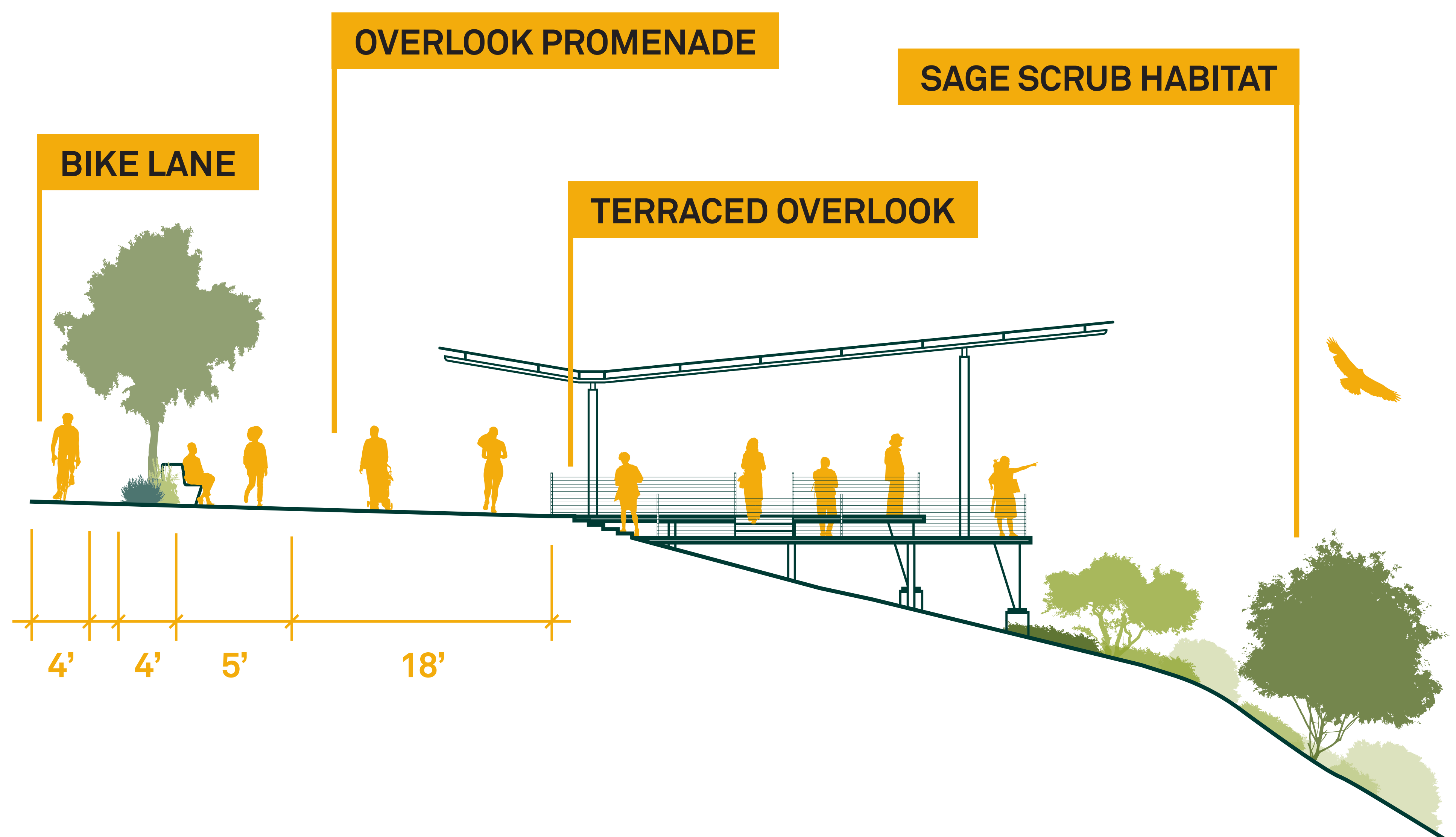
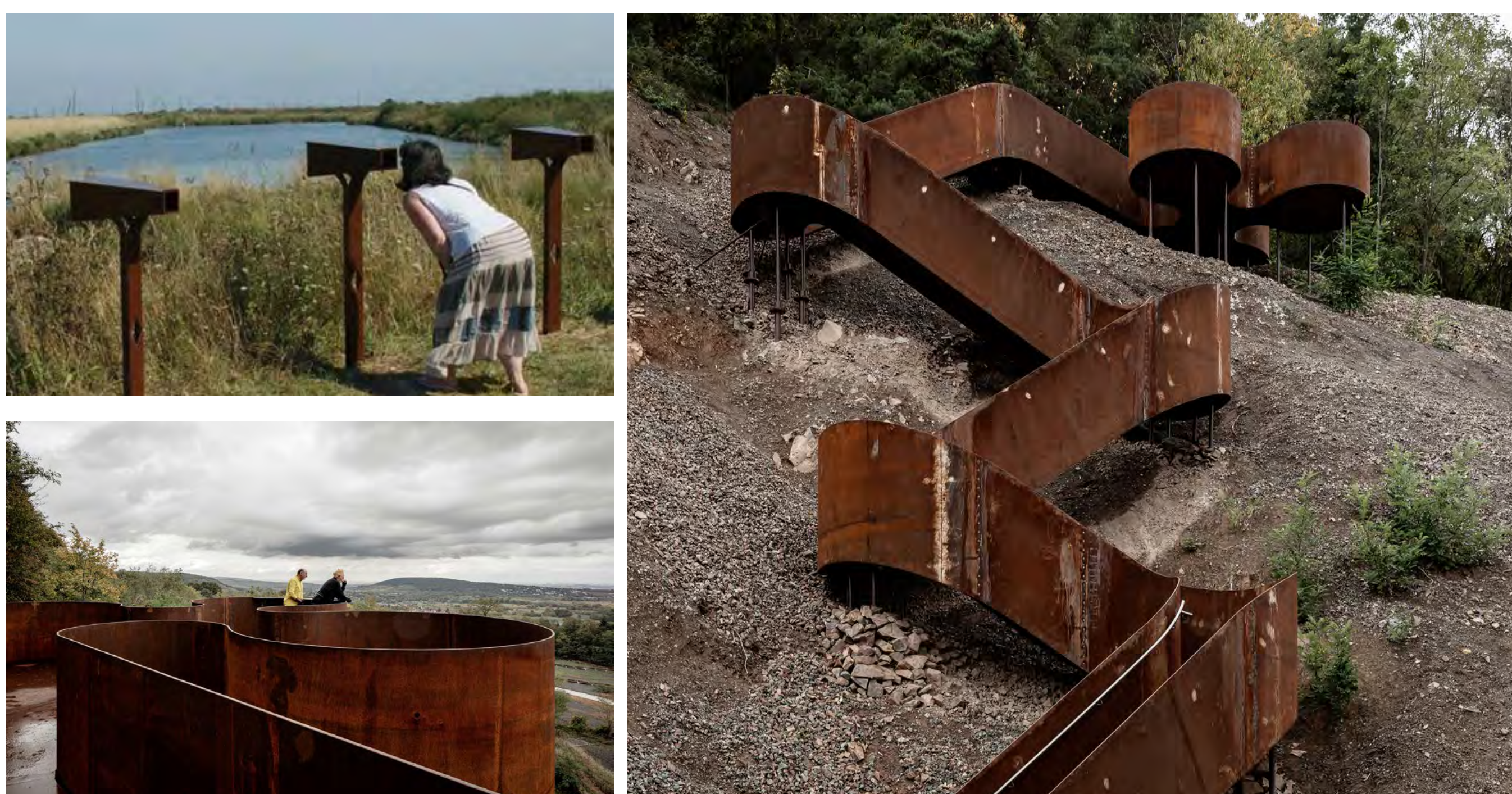
An Expression of Community



Nike Hill Overlook + Plaza

Do you have a favorite vista from Nike Hill?

A 2,000 square-foot building hosting a cafe, an information kiosk, restroom facilities, and a park office is planned for the highest point of the site. This will be complemented with a large overlook deck and pedestrian path.



Nike Hill Overlook What views are important to you?

NATURE + ECOLOGY

Giving Back to the Environment

The Puente Hills Landfill Park has the unique opportunity to enhance a 31-mile habitat corridor as a network of living gardens that celebrate the native landscape to Southern California.

Creating a park ecology is a way to not only ensure that the local ecosystem is able to expand its territory of value, but to provide a place where people can connect to nature in meaningful ways for generations into the future.

Resilient Native Plants

The native plant communities to the Puente Hills consist of:

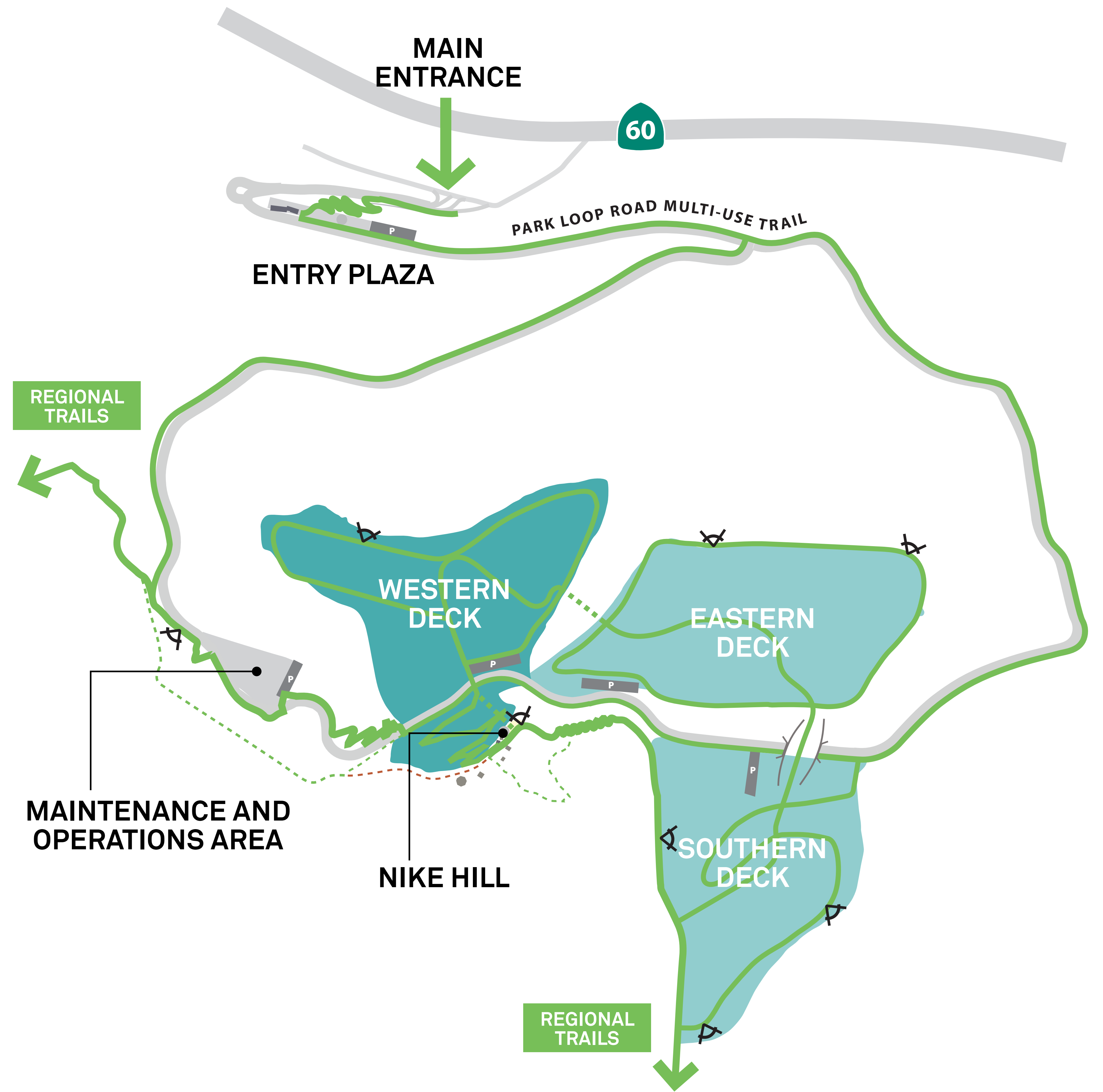
1. **Coastal Sage Scrub** low-growing aromatic shrubs
2. **Chaparral Brushland** with occasional dense thickets
3. **Oak Woodland** shady with large trees

The design of the future park will incorporate these three plant communities with connective trails and scenic overlooks.

Landfill Critters

A variety of birds, insects, mammals, and reptiles make up the ecosystem of wildlife that surrounds the future park in the adjacent hills and canyons.

Through the establishment of new habitat within the park, potential target species that may benefit from the environmental transformation are the California Gnatcatcher (*Poliophtila californica*) and the Coast Horned Lizard (*Phrynosoma coronatum*).



Map of Park Trails and Outlooks 2016 Master Plan

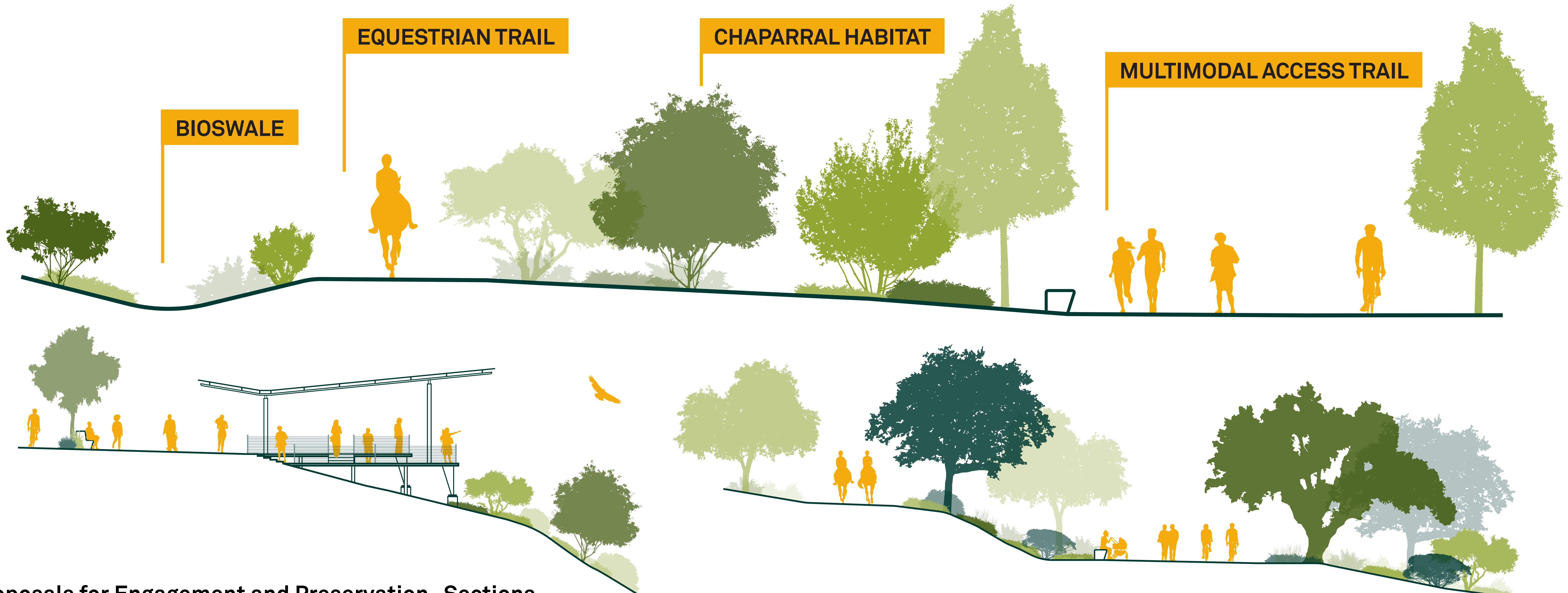
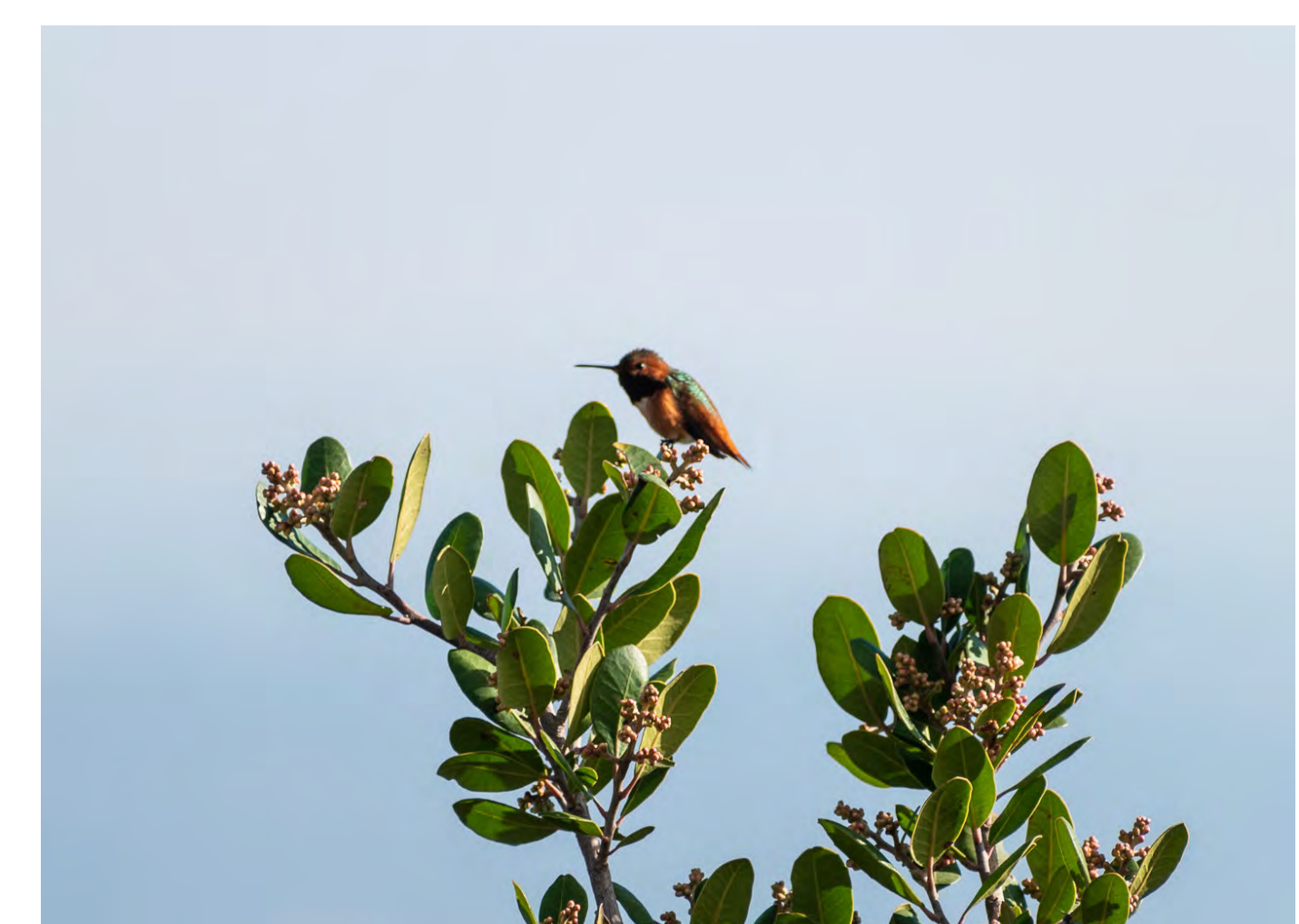
From Landfill, To Park Ecology

Despite being vast and highly constructed, the future park ecology will grow from process-based restoration strategies that immerse visitors in rich habitat through:

1. Encounters with plants and wildlife
2. Nature education programs
3. Native plant nursery / volunteer opportunities

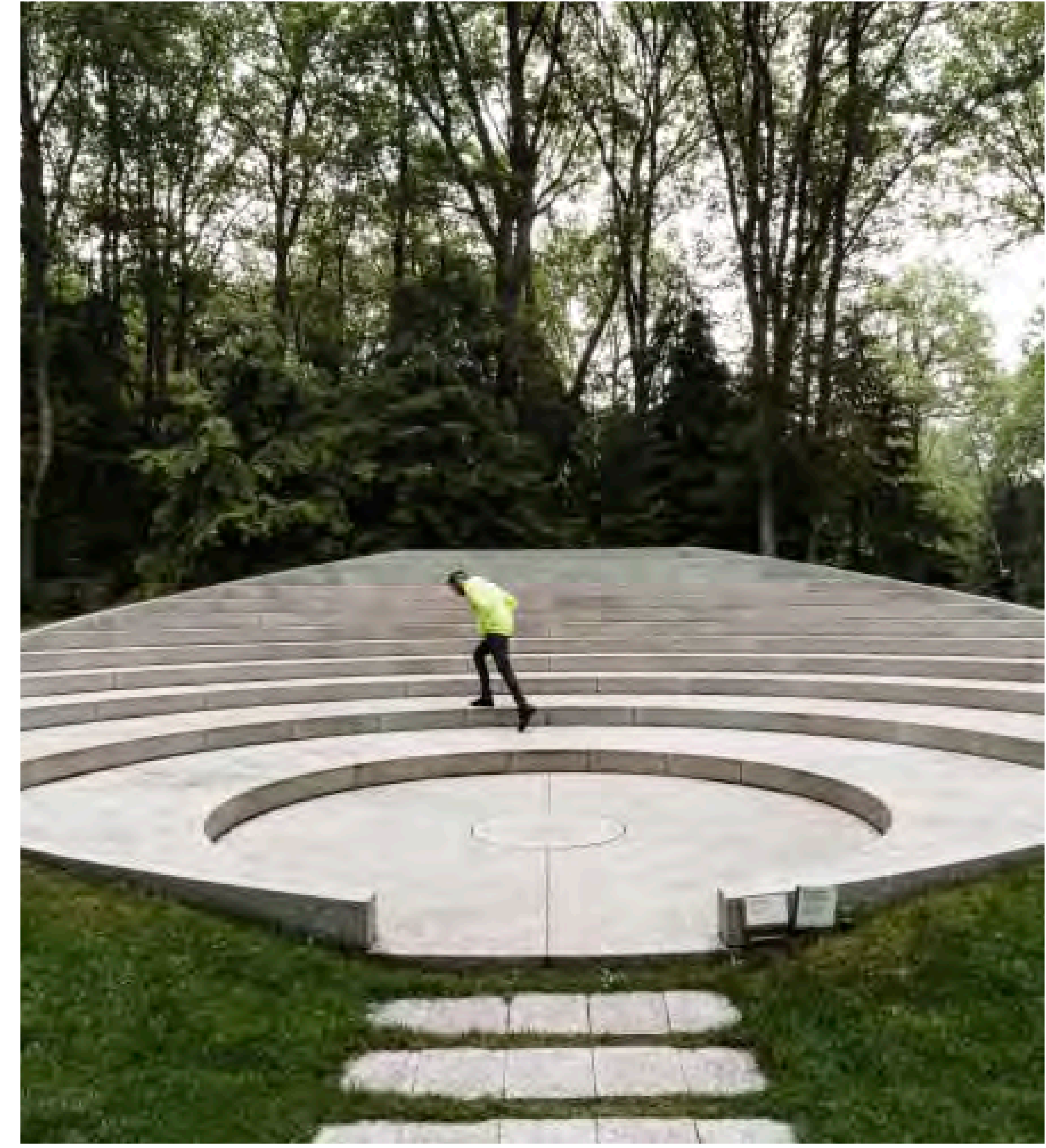
Landscape planting design at the new park will expand the mixed native coastal sage scrub and chaparral currently established on the landfill's western and eastern slopes.

In time, these plant communities will connect to adjacent preserve areas as an expression of the ecosystem that many species of local and migratory wildlife call home.



Proposals for Engagement and Preservation—Sections

COMMUNITY + CULTURE



Performance Space What sort of performance would you like to see? How big or small should this space be? How might you use this space?

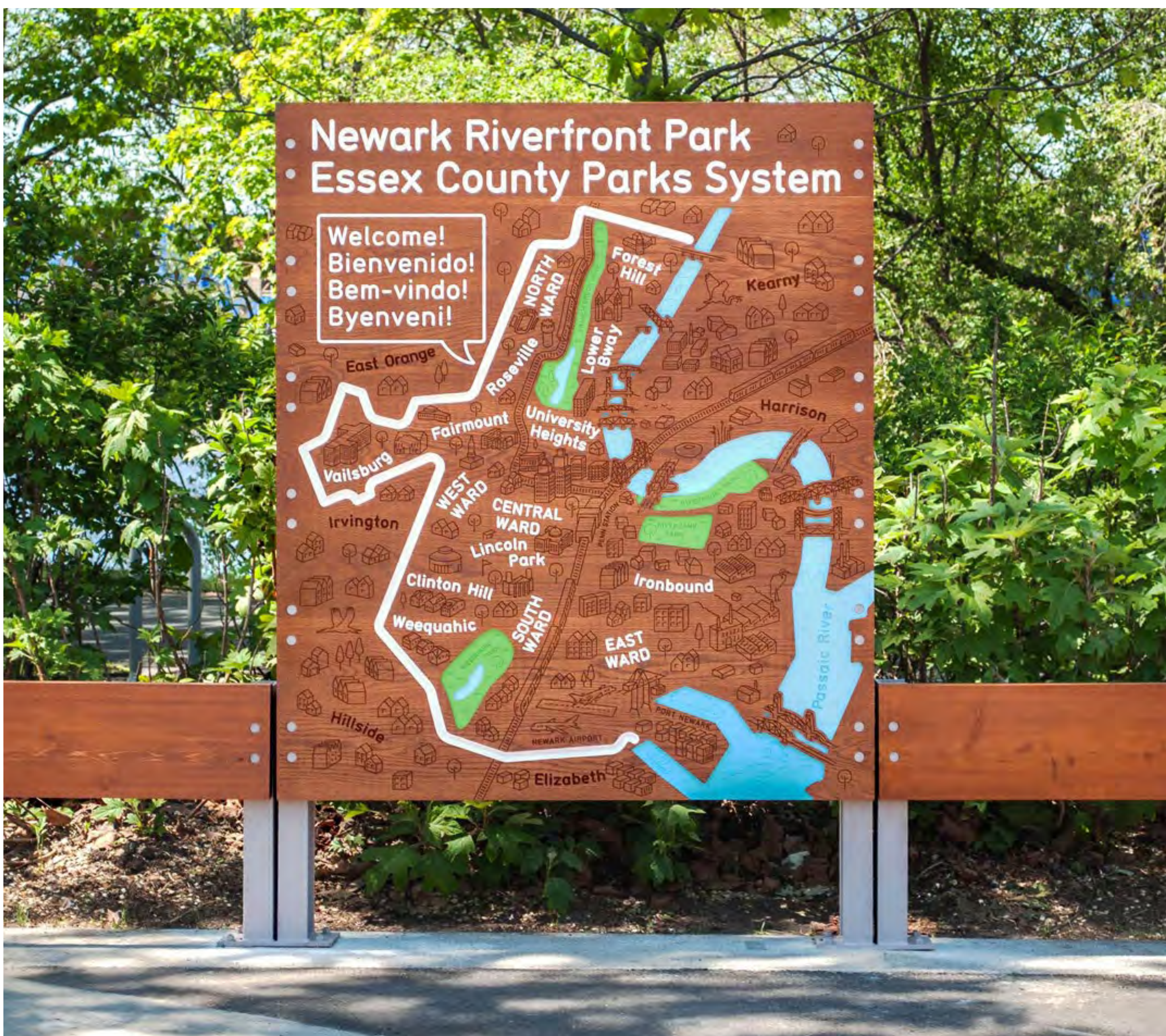


Other Structures Shaded picnic areas, restrooms, and a cafe are all planned for the site. What sort of amenities are needed? Where should these be located?

Bringing Together The Region.



Celebrations What would you celebrate here? How can the park share cultural values and expression? Is embracing culture in design important to you?



Interpretive Signage Programs

Signage and interpretative elements offer a significant opportunity to share stories of the landscape and the surrounding communities. These park features could be as simple as wayfinding elements that help visitors navigate the park; they could also work to educate visitors on the landfill and its ongoing operations, share insights

on importance of the site in regional history, or inform community members about the phased development of the parklands.

Are there particular histories that are significant to you and your community?

What stories do you think we should tell?

PAST EXPERIENCES + LO

Place past important life events for yourself, your family, and your community .

YOU. YOUR FAMILY.
YOUR COMMUNITY.

REGIONAL
HISTORY +
GLOBAL
PROJECTIONS

1953

The last LA Streetcar company closes.



1962

Dodger Stadium opens in the Chavez Ravine Mexican-American community.

1975

Southern California Air Quality Management District was founded; air quality in LA has improved ever since.

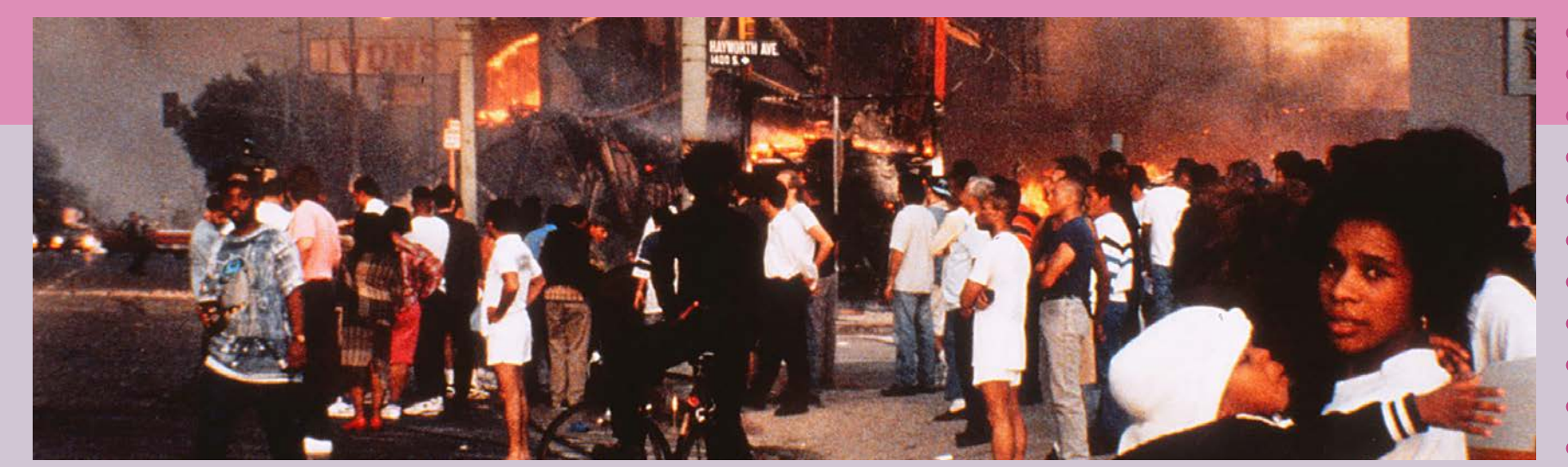


1985

"Back to the Future" scene filmed at the Puente Hills Shopping Mall.

1992

Rodney King uprising.



2001

The Metro Gold Line opens, connecting East LA with DTLA and Pasadena.

2010

LA's first CicLAvia bike ride closes streets to car traffic.



PUEENTE HILLS
LANDFILL
HISTORY +
FUTURE PLANS

1957

Privately-owned San Gabriel Valley Dump opens, operating in the Puente Hills canyons.

1960s

The Sanitation Districts identifies the 500-acre future Puente Hills site.

1970

The Sanitation Districts purchased 1,214 acres for a landfill site.

1980s

The highest point at the Puente Hills Landfill is named Nike Hill for the Nike missile sites that ringed LA County.

1990s

Puente Hills Landfill plans a gas collection system capable of capturing the equivalent of 1,000 gallons of diesel fuel per day.

2000s

Nearly 4 million tons of trash (one-third of the County's total) is added to the Puente Hills Landfill each year.

2013

The Puente Hills Landfill closes after 56 years.

1950s

1960s

1970s

1980s

1990s

2000s

2010

LOOKING TO THE FUTURE

2023

Place future hopes for yourself, your family, and your community.

2021

County Supervisors vote to close Men's County Jail.

2035

All new vehicles sold in California must be electric or plug-in hybrid electrics (PHEVs).

2045

California aims to achieve carbon neutrality.

2050s

Experts predict sea level rise will submerge billions of dollars in California homes, roads, and businesses.

2060s

Global extinction rates are peaking.

2070s

The world's electricity has been fully decarbonized.

2080s

What does the future look like to you?



2020s

Phase 1 of Puente Hills Landfill Park opens with active and passive recreation opportunities.



2030s

Phase 2 of the park opens with pedestrian and bicycle entry access and the improvement of the equestrian trail.

2040s

Phase 3 of the park features stair climbs, a bike skills area, a zip line, a children's nature play area, and stormwater capture infrastructure.

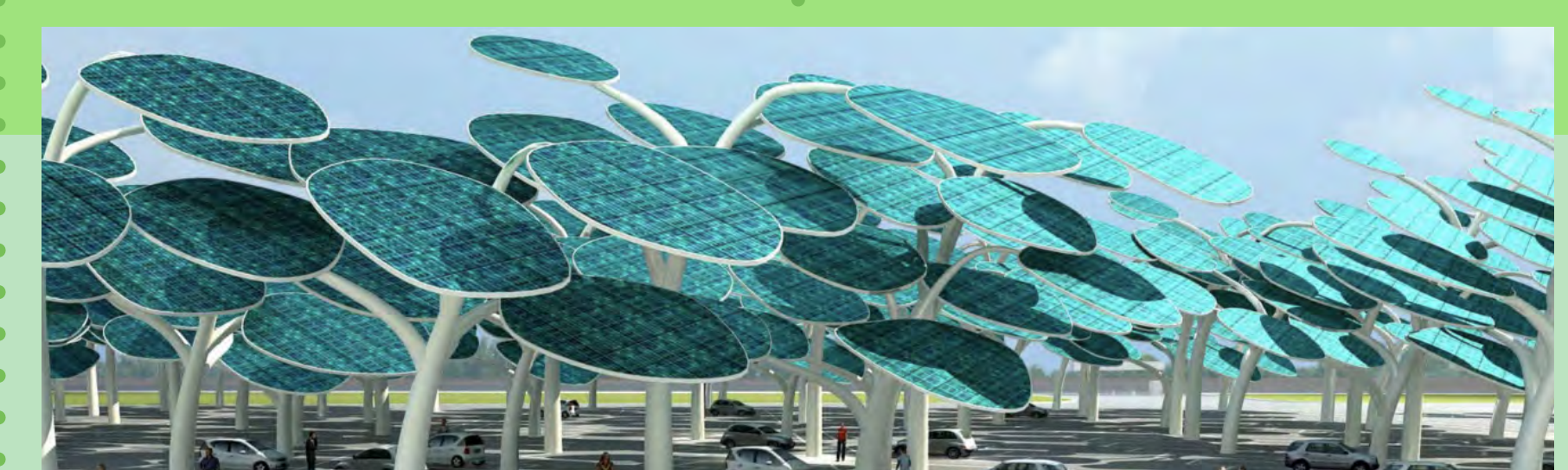


2050s

Phase 4 of the park opens with a planted pedestrian overcrossing and overlook.

2060s

Phase 5 of the park adapts the flare facility as a café, and builds the stair climb from the Eastern Deck to the Flare site.



2070s

Phase 6 of the Puente Hills Landfill Park Master Plan aims to integrate 602+ acres of side slopes into the park.

2080s

Puente Hills Landfill Park serves the region as a hub of ecology, recreation, and community.

0s

2020s

2030s

2040s

2050s

2060s

2070s

2080s