

# ACCESS + OPERATIONS

## What We Heard

### Respect Our Neighbors

→ Many voiced concern about access through the residential neighborhoods, and the potential for increased nuisance from hikers being lost and cutting through homeowners yards.

**Access will not be provided along the eastern edge of the landfill. A cohesive signage program for the park will be developed to provide clear way-finding and directional signage.**

→ Consider the effects of lighting and noise on the neighbors and wildlife.

**New lighting associated with the Proposed Project would be required to comply with existing County ordinances governing light pollution.**

→ Consider the effects of sound on the neighbors and wildlife

### A Clean, Safe, and Comfortable Park

→ Keep the park clean and well maintained from the start

→ Visible staff presence for visitors to feel safe

→ Enforce park hours

**The park will follow the standard, seasonally adjusted LA County Parks and Recreation hours of operation.**

→ Keep the park well lit and secure at night and early mornings

**Safety lighting will be included at key areas, but the park is not anticipated to be open and lit at night in order to mitigate habitat and neighborhood light pollution.**

→ Restrooms and facilities

→ Shade and rain cover

### Traveling To and From the Park

→ Multi-modal access by bike, pedestrian, and public transit from the neighborhood and throughout the park

→ Shuttle connections to existing transit hubs in the neighborhoods

**Connections to local and regional transit stations, as well as other recreational sites and community hubs, are currently being explored.**

→ Improved equestrian connections to the neighborhoods

**Horse staging areas are planned for the park, as well as upgrades to the Workman Mill Road Trailhead and Staging area.**

→ Access for all abilities

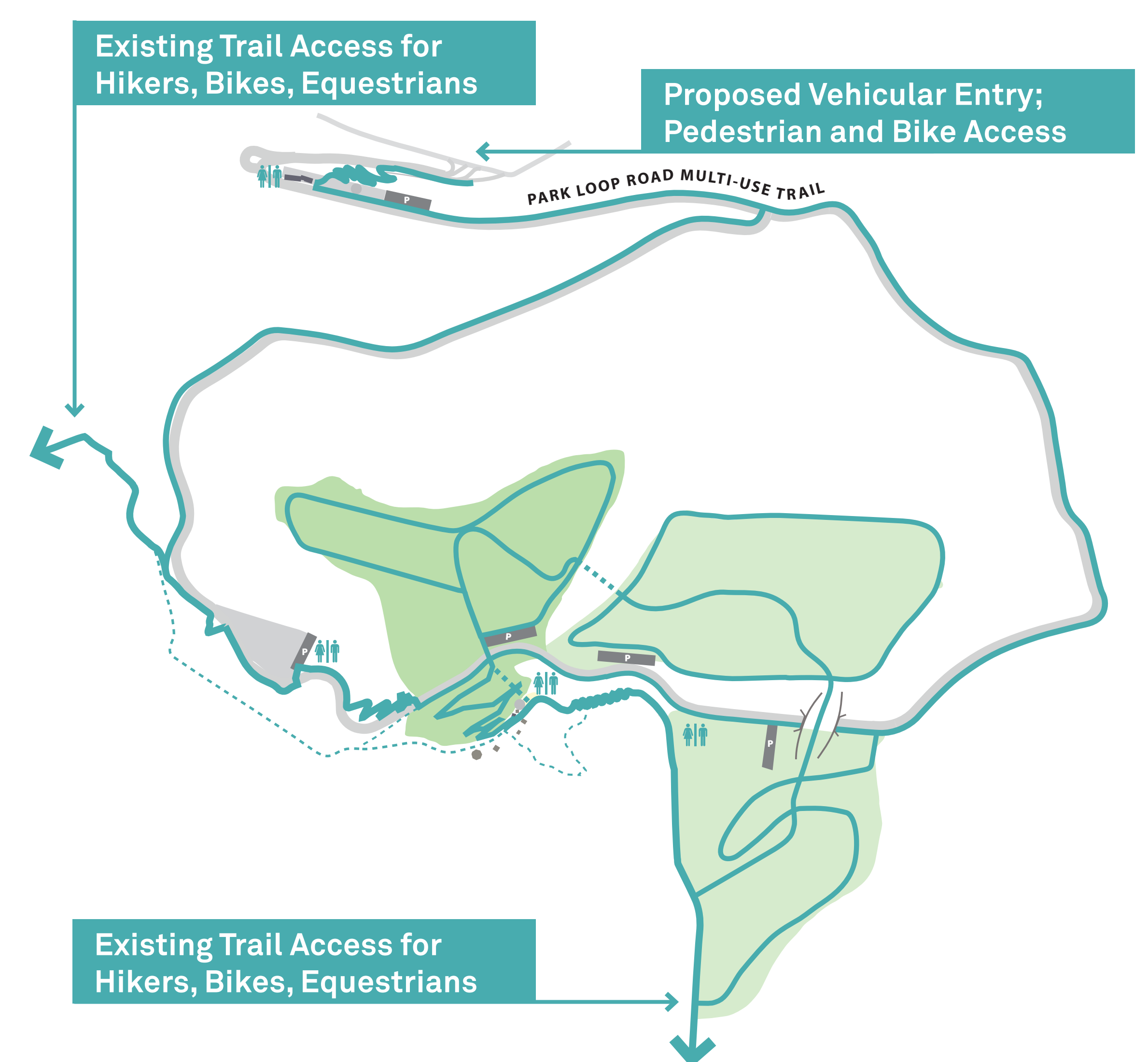
### Getting Around the Park

→ Shared, safe roads and trails for bikes, cars, horses, and pedestrians

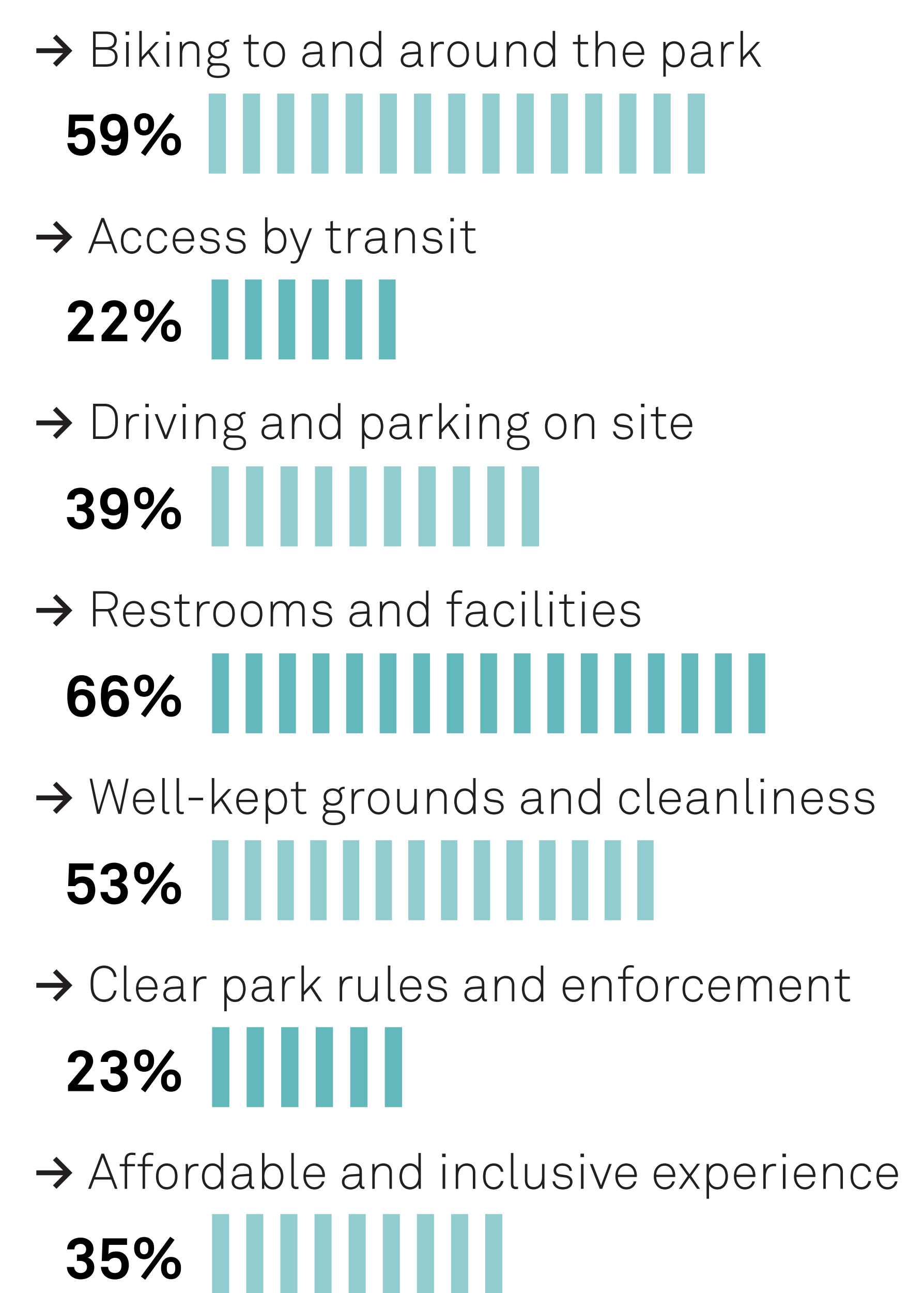
**Yes! The Park Loop Road will offer multi-modal access to the deck parking areas. The Loop Road will be divided to provide clear and safe travel—shared use paths are proposed, along with safety signage that defines right of way and multi-modal awareness.**

→ Safe passage for wildlife across roads and trails

→ Multilingual signage and wayfinding

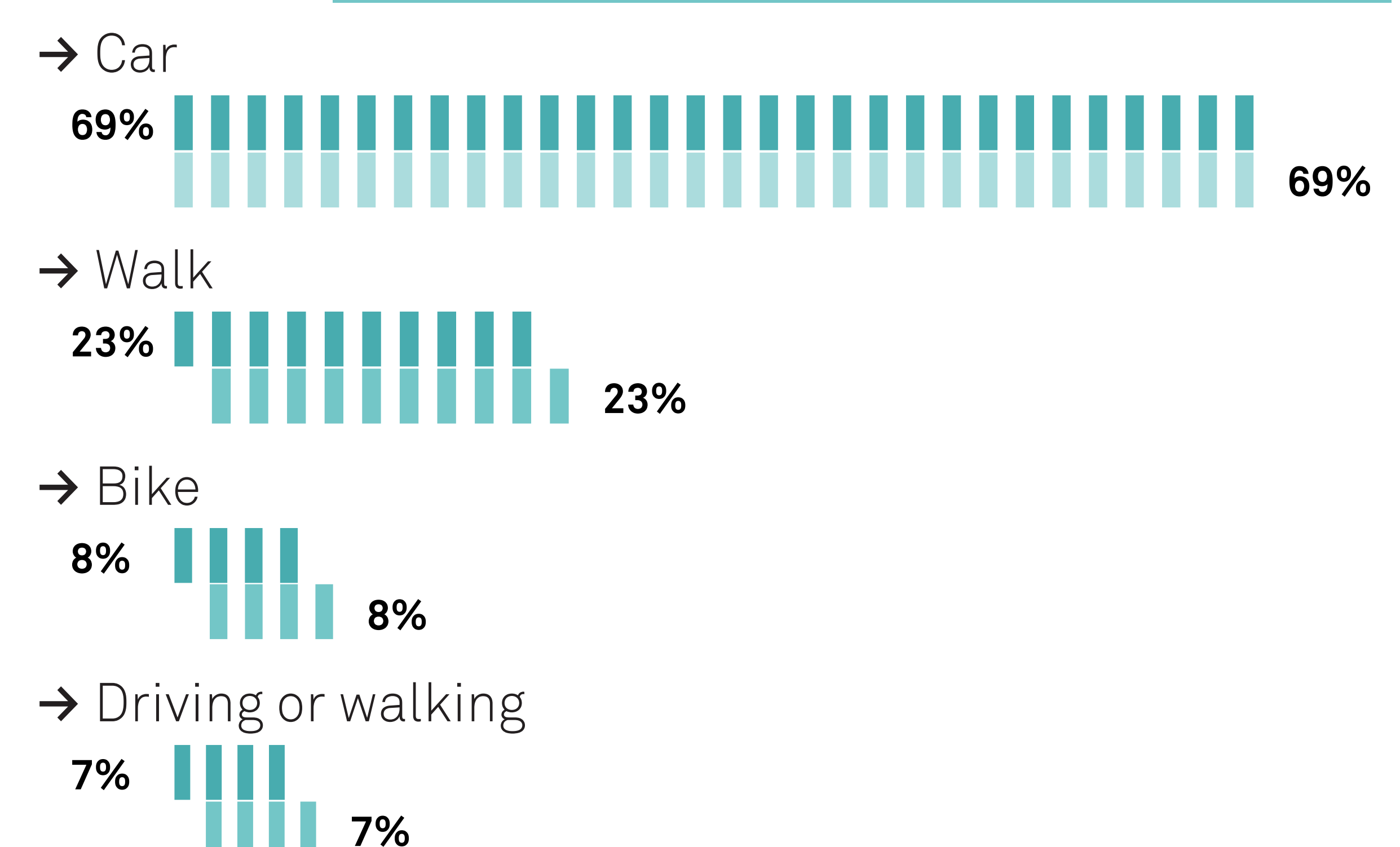


### Access and Operations Priorities:



### How do you get to parks?

#### How will you get to the new park?



# RECREATION + WELLNESS

## What We Heard

### Play For All

- All abilities play equipment; nature-based play
- Two play areas are proposed—one with more traditional play equipment, that will be universally accessible and a nature play area that provides more free play opportunities.**
- A mostly passive experience with opportunities for walking, hiking, and running in nature
- Opportunities for youth recreation

### Enhanced Trail Experience

- Comprehensive trail wayfinding signage and interpretive elements
- Rest and seating areas along trails
- Safety and first aid stations
- Connections and enhancements to existing trails
- Stairs and ramps between park areas

### Biking Improvements

- Mileage markers
- Bike-specific trail signage and wayfinding
- Amenities like “fix-it” stations, bike racks, and water filling
- A bike rental concession
- Safe and dedicated bike lanes

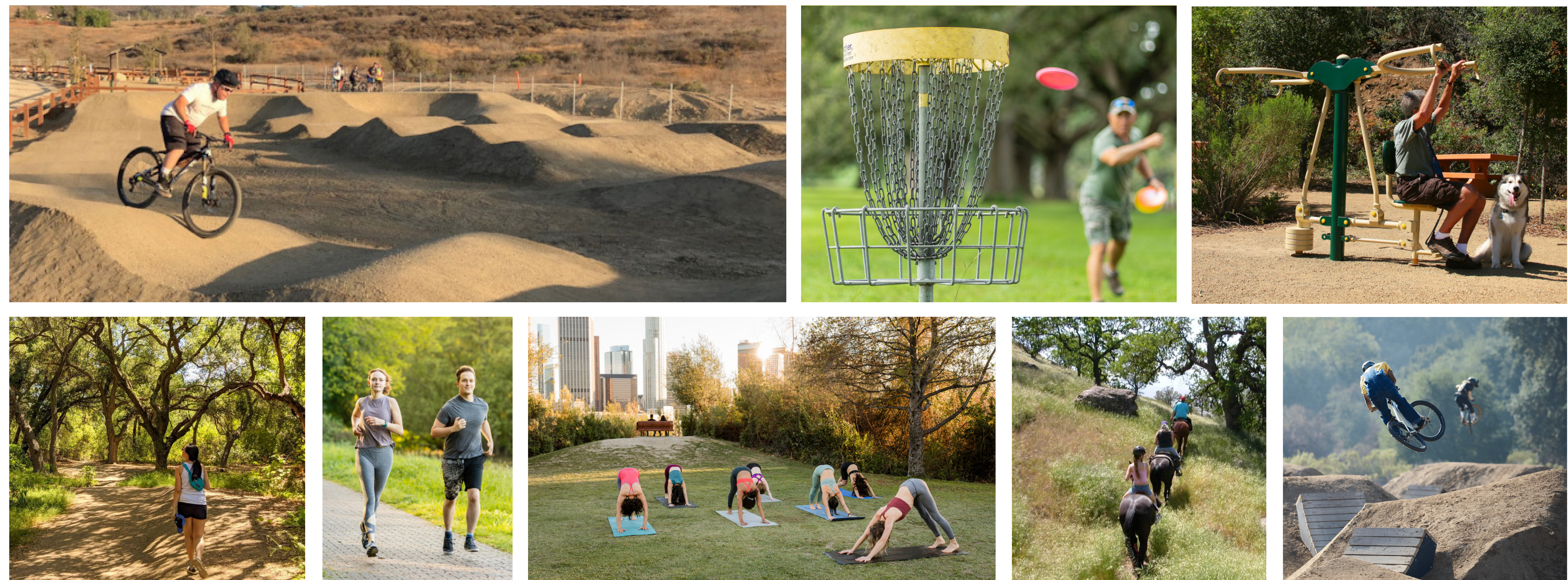
### Athletic Recreation

- Clarity on questions about athletic fields
- Due to the site requirements—slope, zero-water percolation, and limited parking—active sports fields cannot be considered.**
- Alternative activities like Frisbee golf and archery
- Reinforced support for a bike skills area
- A bike rental station



### Arts and Programming Priorities:

- Walking, hiking, running alone  
**76%**
- Walking, hiking, running in groups  
**39%**
- Organized fitness classes  
**28%**
- Self-guided fitness amenities and equipment  
**30%**
- Bike skills and cycling  
**38%**
- Equestrian activities  
**25%**
- Wellness classes (yoga, meditation, etc.)  
**39%**



Experiential collages showing recreation opportunities on the Western Deck

# ARTS + PROGRAMMING

## What We Heard

### Programming for All

- Programs for all ages and abilities
- Games and activities similar to other Los Angeles County Parks
- Kids arts activities like music and theater
- Holiday events for the whole family
- Social programs for seniors
- Designated areas for art and painting

### Bringing People Together

- Culture-based programming for all backgrounds
- Art and murals that celebrate different cultures
- Ethnic holidays and events where all are welcome

### Educational and Intergenerational

- Programs related to landfill history and science
- Nature and wildlife learning
- Programs for kids and families to learn together

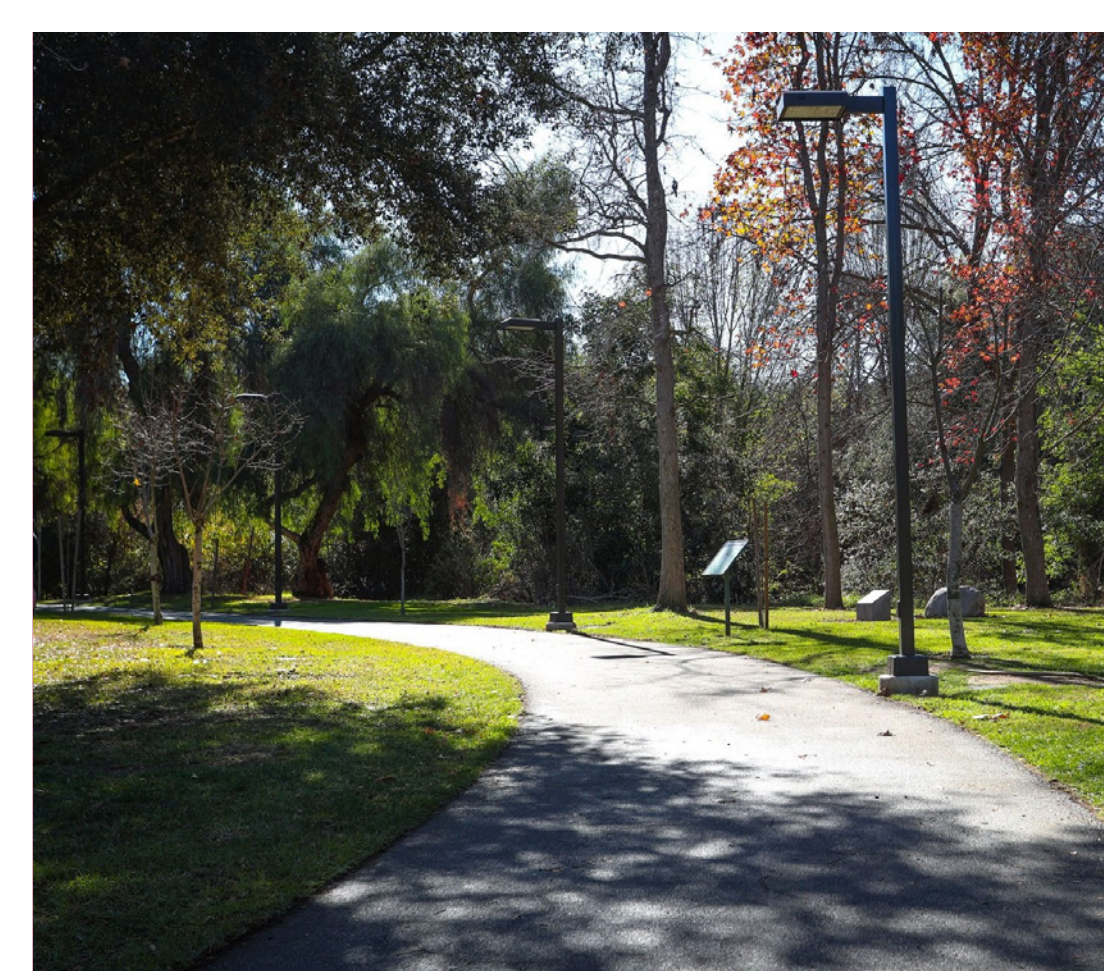
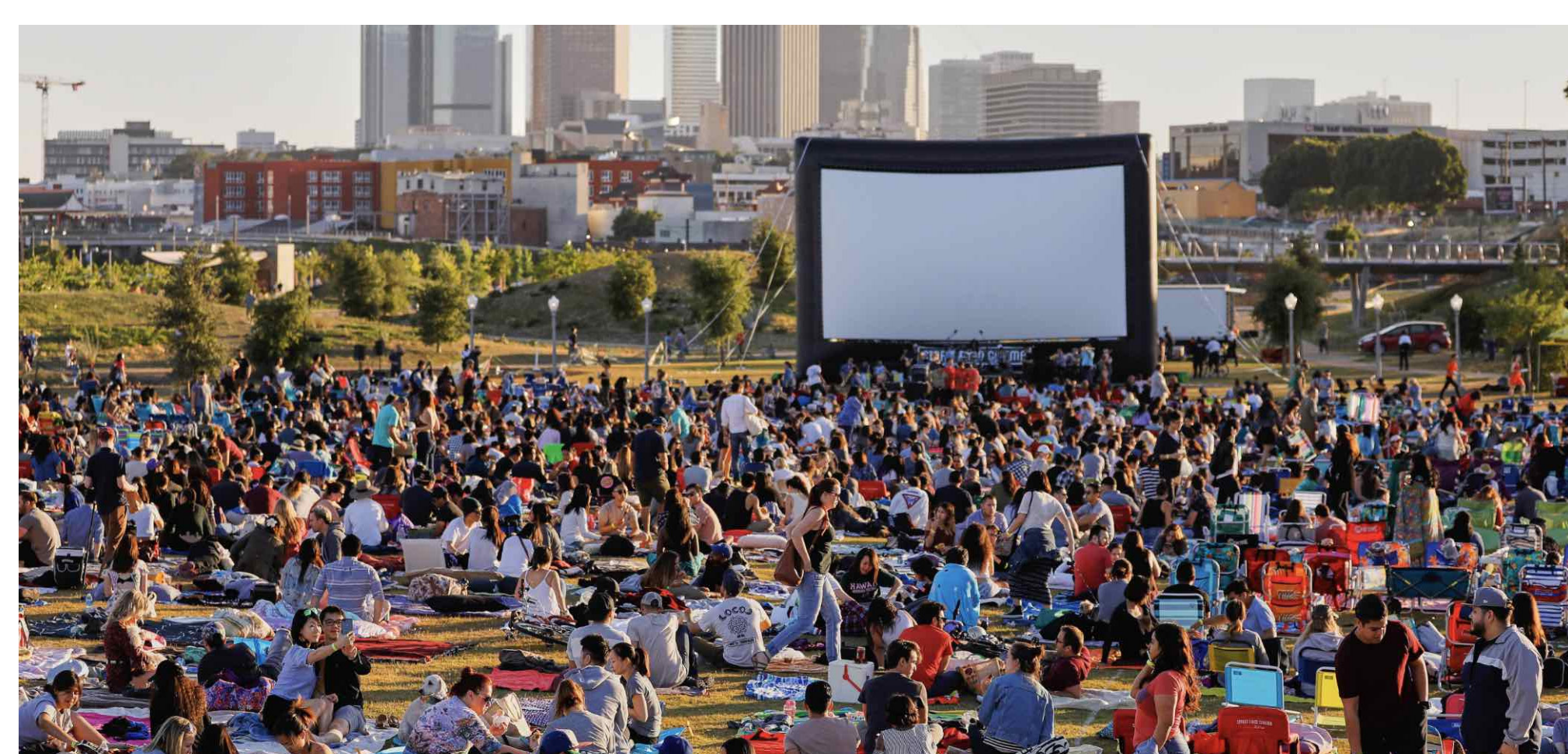
### Impact on the Neighbors

- Permits and advisory notices for events
- Focus on community-oriented events
- Consider sound impact on neighbors and wildlife



### Arts and Programming Priorities:

- Games and play  
54%
- Children and family programs  
57%
- Art installations  
30%
- Outdoor theater and dance performance  
38%
- Small musical performance  
23%
- Concerts and festivals  
56%



### Park Precedents

You told us your favorite park was Schabarum Park. We will look to Schabarum Park's features like picnic areas, seating elements, play structures, and trails for inspiration for your new park!

### What is your favorite park?

- |                          |                          |
|--------------------------|--------------------------|
| → Schabarum Park<br>20   | → Orange Grove Park<br>4 |
| → San Angelo Park<br>9   | → Mayberry Park<br>4     |
| → Pamela Park<br>9       | → Steinmetz<br>3         |
| → Puente Hills Park<br>6 | → Legg Lake<br>3         |
| → Griffith Park<br>6     |                          |



Cherry blossom festival at Schabarum Regional Park