

SHUTTLE PLANNING

What is the role of public transit in designing a regional park?

550 Acres

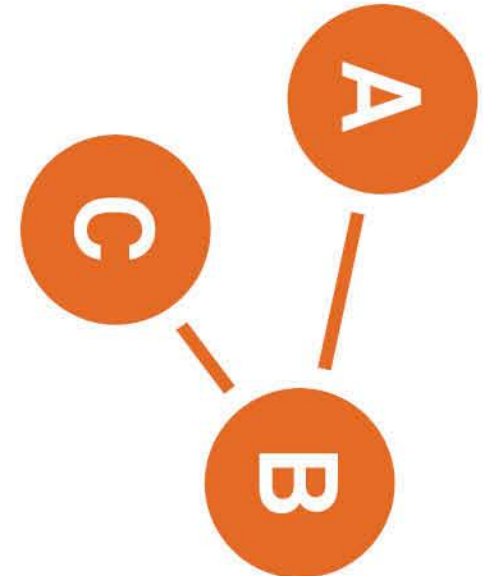
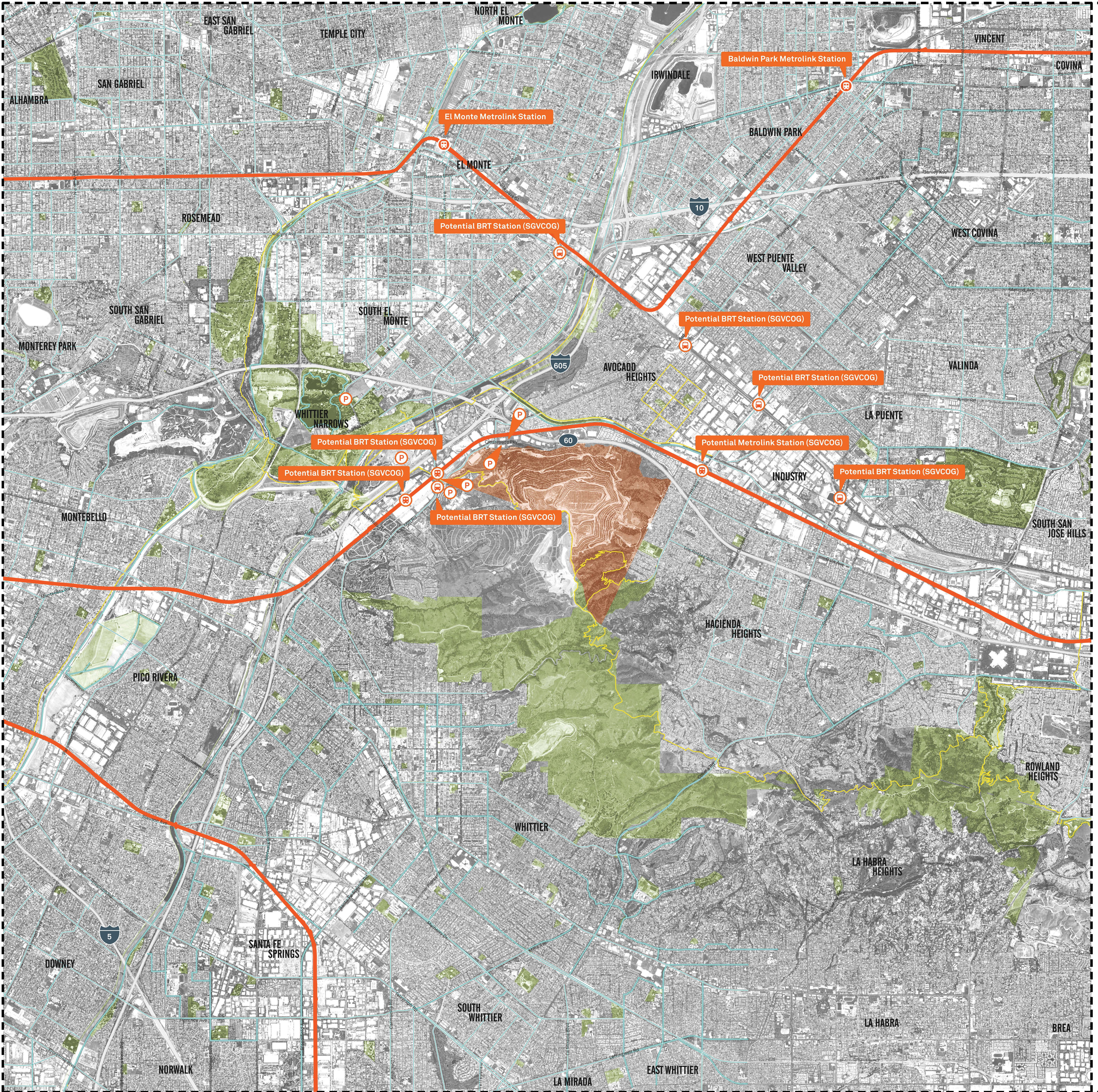


0' 3750'

- Potential Offsite Parking
- Regional Trails
- Existing and Proposed Bikeways
- Metrolink Lines

Potential local and regional hubs to shuttle from:

- Metrolink or BRT Stations
- Public Libraries
- Rio Hondo College
- Hacienda Heights Community Center
- Whittier Narrows or Schabarum Park



Participate in this exercise by first mapping the transit route you would take to the park. Then, use the provided dots to help identify potential transit stops to the park!

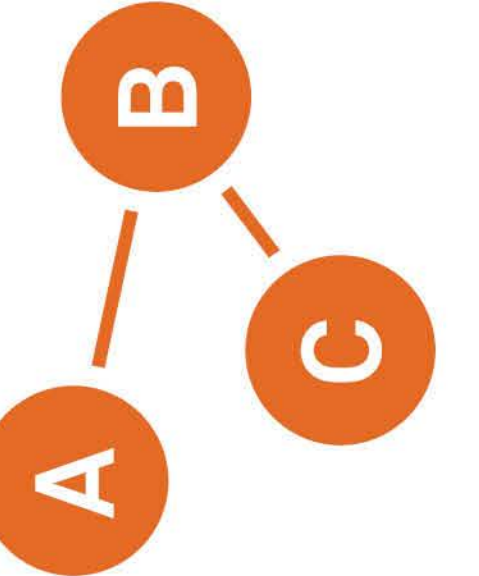


How can better public transit shape A Park For All?
 → What is your preferred transit hub?
 → Do you utilize public transportation often? If so, what for?
 → How should the park interact with public transportation routes?

How can better public transit shape A Park For All?
 → What is your preferred transit hub?
 → Do you utilize public transportation often? If so, what for?
 → How should the park interact with public transportation routes?



Participate in this exercise by first mapping the transit route you would take to the park. Then, use the provided dots to help identify potential transit stops to the park!



SHUTTLE PLANNING

What is the role of public transit in designing a regional park?

550 Acres



0' 3750'

- Potential Offsite Parking
- Regional Trails
- Existing and Proposed Bikeways
- Metrolink Lines

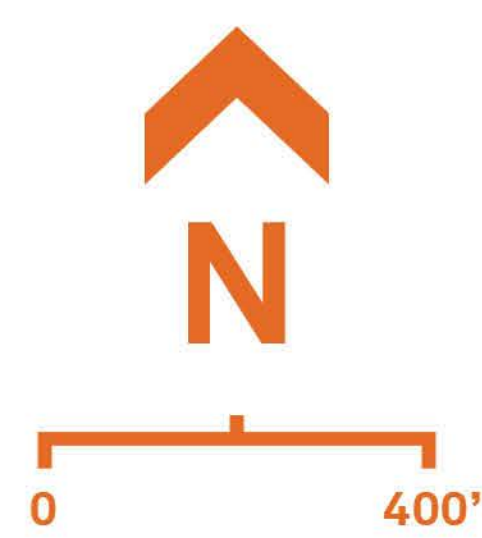
Potential local and regional hubs to shuttle from:

- Metrolink or BRT Stations
- Public Libraries
- Rio Hondo College
- Hacienda Heights Community Center
- Crossroads Parkway
- Whittier Narrows or Schabarum Park

PARK TRAILS

What experiences would you capture with the park's trail network?

5 Acres



Phase One includes the following trail improvements:

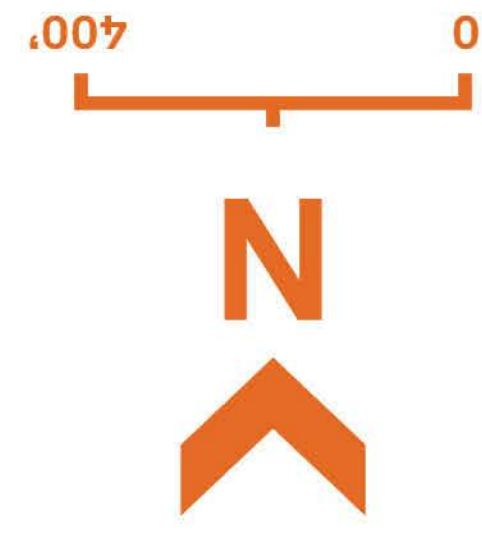
- Park Loop Road, roughly 2.5 miles
- Deck Connector Trail, roughly 1.2 miles
- Western Loop Trail, roughly 1.1 miles
- Eastern Loop Trail, roughly 1.2 miles
- Southern Loop Trail, roughly 0.9 miles
- Schabarum-Skyline Trail improvements

PARK TRAILS

What experiences would you capture with the park's trail network?



5 Acres



Phase One includes the following trail improvements:

- Park Loop Road, roughly 2.5 miles
- Deck Connector Trail, roughly 1.2 miles
- Western Loop Trail, roughly 1.1 miles
- Eastern Loop Trail, roughly 1.2 miles
- Southern Loop Trail, roughly 0.9 miles
- Schabarum-Skyline Trail improvements

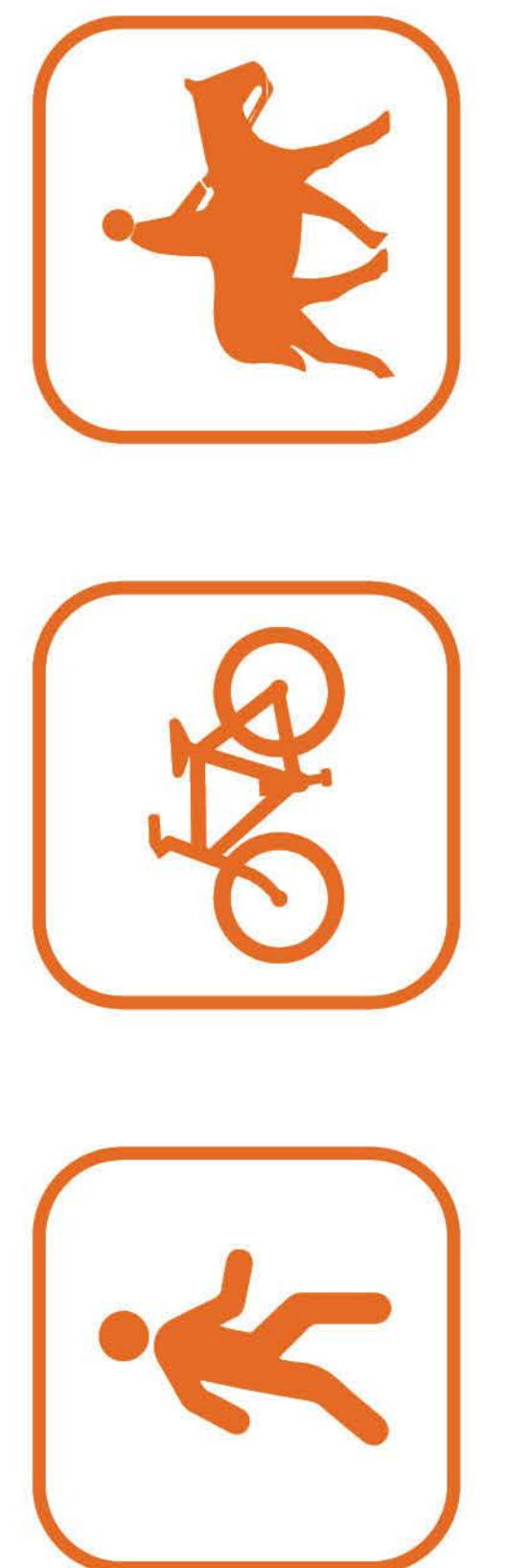
A
B
C

Participate in this exercise by using the provided string to connect interest points throughout the park. Feel free to trace, edit, or add to the proposed trail system!



What design ideas inspire your vision for park trails?
 → How does your community utilize existing trails?
 → What types of activities should park trails accommodate?
 → How do you imagine trails connecting to other park features?

What design ideas inspire your vision for park trails?
 → How does your community utilize existing trails?
 → What types of activities should park trails accommodate?
 → How do you imagine trails connecting to other park features?



Participate in this exercise by using the provided string to connect interest points throughout the park. Feel free to trace, edit, or add to the proposed trail system!

A
B
C

